

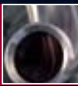




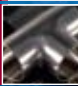

# APN

Where precision and value take form



STANDARD AND CUSTOM STAINLESS STEEL TUBE FITTINGS

BEVEL SEAT FITTINGS

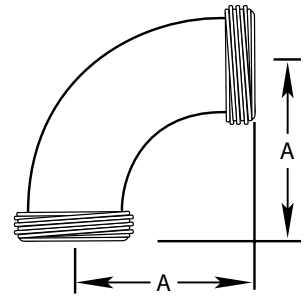
CONTENTS		Bevel Seat Fittings
		BPE Fittings
		Clamp Fittings
		I-Line Fittings
		John Perry Fittings
		Sanitary Butt weld Fittings
		Tube O.D. Fittings

Call toll-free to order: 877.276.7766 • [www.apn-inc.net](http://www.apn-inc.net)

## 2C

### 90° Threaded Bevel Seat x Threaded Bevel Seat Elbow

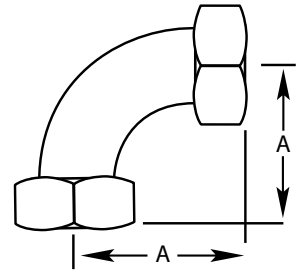
304 Item Number	Tube O.D.	A	316L Item Number
2C-0100-7-4	1	2.188	2C-0100-7-6
2C-0150-7-4	1.5	2.968	2C-0150-7-6
2C-0200-7-4	2	3.719	2C-0200-7-6
2C-0250-7-4	2.5	4.843	2C-0250-7-6
2C-0300-7-4	3	5.906	2C-0300-7-6
2C-0400-7-4	4	8.062	2C-0400-7-6



## 2E

### 90° Plain Bevel Seat x Plain Bevel Seat with Hex Nut Elbow

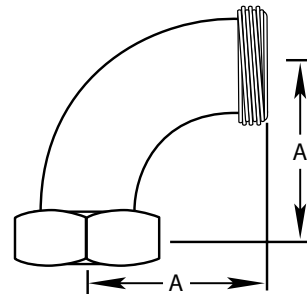
304 Item Number	Tube O.D.	A	316L Item Number
2E-0100-7-4	1	2.188	2E-0100-7-6
2E-0150-7-4	1.5	2.968	2E-0150-7-6
2E-0200-7-4	2	3.719	2E-0200-7-6
2E-0250-7-4	2.5	4.843	2E-0250-7-6
2E-0300-7-4	3	5.906	2E-0300-7-6
2E-0400-7-4	4	8.062	2E-0400-7-6

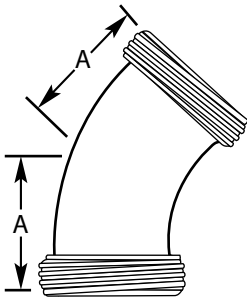


## 2F

### 90° Threaded Bevel Seat x Plain Bevel Seat with Hex Nut Elbow

304 Item Number	Tube O.D.	A	316L Item Number
2F-0100-7-4	1	2.188	2F-0100-7-6
2F-0150-7-4	1.5	2.968	2F-0150-7-6
2F-0200-7-4	2	3.719	2F-0200-7-6
2F-0250-7-4	2.5	4.843	2F-0250-7-6
2F-0300-7-4	3	5.906	2F-0300-7-6
2F-0400-7-4	4	8.062	2F-0400-7-6

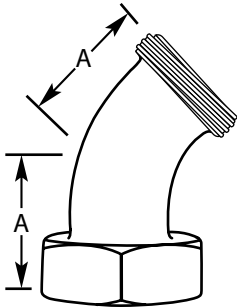




**2K**

**45° Threaded Bevel Seat x Threaded Bevel Seat Elbow**

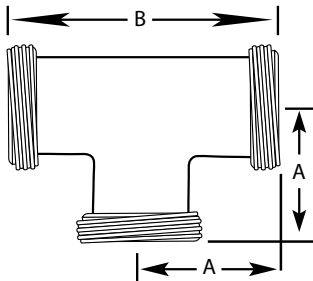
304 Item Number	Tube O.D.	A	316L Item Number
2K-0100-7-4	1	1.313	2K-0100-7-6
2K-0150-7-4	1.5	1.655	2K-0150-7-6
2K-0200-7-4	2	2.125	2K-0200-7-6
2K-0250-7-4	2.5	2.625	2K-0250-7-6
2K-0300-7-4	3	3.125	2K-0300-7-6
2K-0400-7-4	4	4.250	2K-0400-7-6



**2P**

**45° Threaded Bevel Seat x Plain Bevel Seat with Hex Nut Elbow**

304 Item Number	Tube O.D.	A	316L Item Number
2P-0100-7-4	1	1.313	2P-0100-7-6
2P-0150-7-4	1.5	1.655	2P-0150-7-6
2P-0200-7-4	2	2.125	2P-0200-7-6
2P-0250-7-4	2.5	2.625	2P-0250-7-6
2P-0300-7-4	3	3.125	2P-0300-7-6
2P-0400-7-4	4	4.250	2P-0400-7-6



**7**

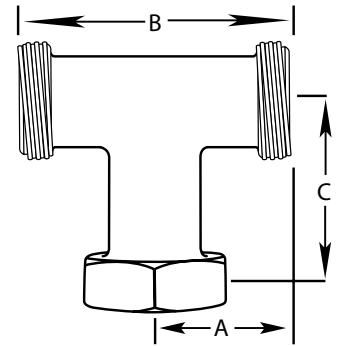
**Threaded Bevel Seat Tee**

304 Item Number	Tube O.D.	A	B	316L Item Number
7-0100-7-4	1	1.812	3.625	7-0100-7-6
7-0150-7-4	1.5	2.375	4.750	7-0150-7-6
7-0200-7-4	2	2.782	5.563	7-0200-7-6
7-0250-7-4	2.5	3.188	6.375	7-0250-7-6
7-0300-7-4	3	3.500	7.000	7-0300-7-6
7-0400-7-4	4	4.656	9.313	7-0400-7-6

## 7A

### Threaded Bevel Seat Run x Plain Bevel Seat Branch with Hex Nut Tee

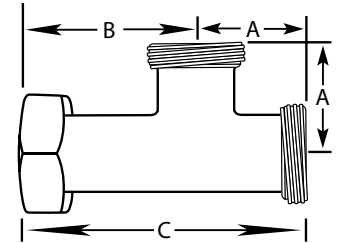
304 Item Number	Tube O.D.	A	B	C	316L Item Number
7A-0100-7-4	1	1.813	3.625	2.688	7A-0100-7-6
7A-0150-7-4	1.5	2.375	4.750	3.406	7A-0150-7-6
7A-0200-7-4	2	2.781	5.562	3.813	7A-0200-7-6
7A-0250-7-4	2.5	3.188	6.375	4.250	7A-0250-7-6
7A-0300-7-4	3	3.500	7.000	4.625	7A-0300-7-6
7A-0400-7-4	4	4.656	9.312	6.125	7A-0400-7-6



## 7B

### Threaded Bevel Seat x Plain Bevel Seat with Hex Nut Run x Threaded Bevel Seat Branch

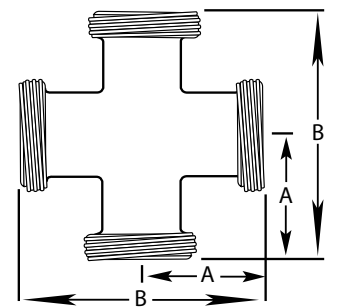
304 Item Number	Tube O.D.	A	B	C	316L Item Number
7B-0100-7-4	1	1.813	2.688	4.500	7B-0100-7-6
7B-0150-7-4	1.5	2.375	3.406	5.781	7B-0150-7-6
7B-0200-7-4	2	2.781	3.813	6.594	7B-0200-7-6
7B-0250-7-4	2.5	3.188	4.250	7.438	7B-0250-7-6
7B-0300-7-4	3	3.500	4.625	8.125	7B-0300-7-6
7B-0400-7-4	4	4.656	6.125	10.781	7B-0400-7-6

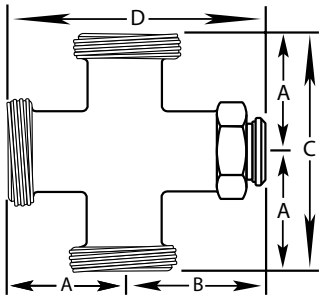


## 9

### Threaded Bevel Seat Cross

304 Item Number	Tube O.D.	A	B	316L Item Number
9-0100-7-4	1	1.812	3.625	9-0100-7-6
9-0150-7-4	1.5	2.375	4.750	9-0150-7-6
9-0200-7-4	2	2.781	5.562	9-0200-7-6
9-0250-7-4	2.5	3.187	6.375	9-0250-7-6
9-0300-7-4	3	3.500	7.000	9-0300-7-6
9-0400-7-4	4	4.656	9.312	9-0400-7-6

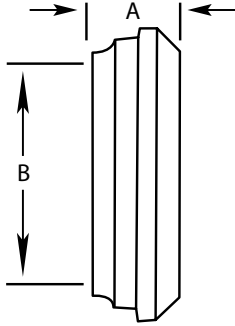




**9A**

**Threaded Bevel Seat x Plain Bevel Seat with Hex Nut Cross**

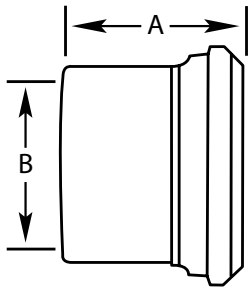
304 Item Number	Tube O.D.	A	B	C	D	316L Item Number
9A-0100-7-4	1	1.813	2.688	3.625	4.500	9A-0100-7-6
9A-0150-7-4	1.5	2.375	3.406	4.750	5.781	9A-0150-7-6
9A-0200-7-4	2	2.781	3.813	5.563	6.594	9A-0200-7-6
9A-0250-7-4	2.5	3.188	4.250	6.375	7.438	9A-0250-7-6
9A-0300-7-4	3	3.500	4.625	7.000	8.125	9A-0300-7-6
9A-0400-7-4	4	4.656	6.125	9.313	10.781	9A-0400-7-6



**14PRF**

**Short Plain Bevel Seat Ferrule**

304 Item Number	Tube O.D.	A	B	316L Item Number
14PRF-0100-4	1	0.6875	0.870	14PRF-0100-6
14PRF-0150-4	1.5	0.7190	1.370	14PRF-0150-6
14PRF-0200-4	2	0.7190	1.870	14PRF-0200-6
14PRF-0250-4	2.5	0.8438	2.370	14PRF-0250-6
14PRF-0300-4	3	0.9060	2.870	14PRF-0300-6
14PRF-0400-4	4	1.2190	3.834	14PRF-0400-6



**14A**

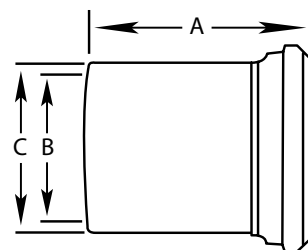
**Long Plain Bevel Seat Ferrule**

304 Item Number	Tube O.D.	A	B	316L Item Number
14A-0100-4	1	1.375	0.870	14A-0100-6
14A-0150-4	1.5	1.500	1.370	14A-0150-6
14A-0200-4	2	1.500	1.870	14A-0200-6
14A-0250-4	2.5	1.750	2.370	14A-0250-6
14A-0300-4	3	1.750	2.870	14A-0300-6
14A-0400-4	4	1.750	3.834	14A-0400-6

## 14W

### Heavy Tank Spud Plain Bevel Seat Ferrule

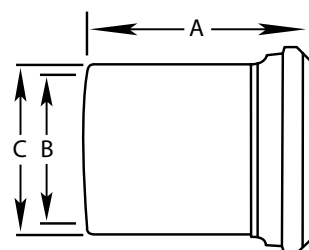
304 Item Number	Tube O.D.	A	B	C	316L Item Number
14W-0100-4	1	2.375	0.870	1.156	14W-0100-6
14W-0150-4	1.5	2.531	1.370	1.671	14W-0150-6
14W-0200-4	2	2.781	1.870	2.187	14W-0200-6
14W-0250-4	2.5	3.062	2.370	2.703	14W-0250-6
14W-0300-4	3	3.531	2.870	3.218	14W-0300-6
14W-0400-4	4	4.312	3.834	4.250	14W-0400-6



## 14WL

### Light Tank Spud Plain Bevel Seat Ferrule

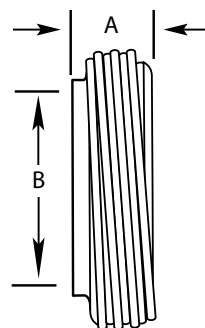
304 Item Number	Tube O.D.	A	B	C	316L Item Number
14WL-0100-4	1	2.00	0.870	1.0	14WL-0100-6
14WL-0150-4	1.5	2.25	1.370	1.5	14WL-0150-6
14WL-0200-4	2	2.50	1.870	2.0	14WL-0200-6
14WL-0250-4	2.5	2.75	2.370	2.5	14WL-0250-6
14WL-0300-4	3	3.00	2.870	3.0	14WL-0300-6
14WL-0400-4	4	4.00	3.834	4.0	14WL-0400-6

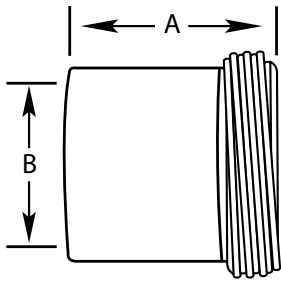


## 15TRF

### Short Threaded Bevel Seat Ferrule

304 Item Number	Tube O.D.	A	B	316L Item Number
15TRF-0100-4	1	0.6875	0.870	15TRF-0100-6
15TRF-0150-4	1.5	0.7190	1.370	15TRF-0150-6
15TRF-0200-4	2	0.7190	1.870	15TRF-0200-6
15TRF-0250-4	2.5	0.8438	2.370	15TRF-0250-6
15TRF-0300-4	3	0.9060	2.870	15TRF-0300-6
15TRF-0400-4	4	1.2190	3.834	15TRF-0400-6

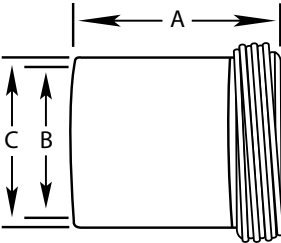




## 15A

### Long Threaded Bevel Seat Ferrule

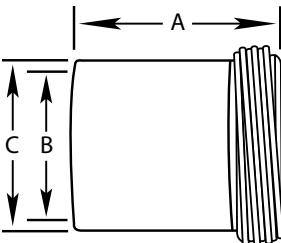
304 Item Number	Tube O.D.	A	B	316L Item Number
15A-0100-4	1	1.375	0.870	15A-0100-6
15A-0150-4	1.5	1.500	1.370	15A-0150-6
15A-0200-4	2	1.500	1.870	15A-0200-6
15A-0250-4	2.5	1.750	2.370	15A-0250-6
15A-0300-4	3	1.750	2.870	15A-0300-6
15A-0400-4	4	1.750	3.834	15A-0400-6



## 15W

### Heavy Tank Spud Threaded Bevel Seat Ferrule

304 Item Number	Tube O.D.	A	B	C	316L Item Number
15W-0100-4	1	1.500	0.870	1.250	15W-0100-6
15W-0150-4	1.5	1.625	1.370	1.750	15W-0150-6
15W-0200-4	2	1.750	1.870	2.312	15W-0200-6
15W-0250-4	2.5	1.750	2.370	2.875	15W-0250-6
15W-0300-4	3	1.812	2.870	3.375	15W-0300-6
15W-0400-4	4	2.125	3.834	4.250	15W-0400-6



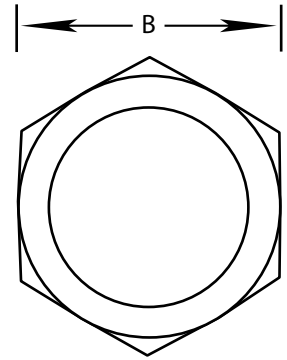
## 15WL

### Light Tank Spud Threaded Bevel Seat Ferrule

304 Item Number	Tube O.D.	A	B	C	316L Item Number
15WL-0100-4	1	2.00	0.870	1.0	15WL-0100-6
15WL-0150-4	1.5	2.25	1.370	1.5	15WL-0150-6
15WL-0200-4	2	2.50	1.870	2.0	15WL-0200-6
15WL-0250-4	2.5	2.75	2.370	2.5	15WL-0250-6
15WL-0300-4	3	3.00	2.870	3.0	15WL-0300-6
15WL-0400-4	4	4.00	3.834	4.0	15WL-0400-6

# 13H

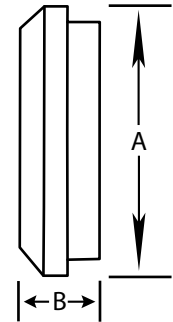
## Hex Union Nut



304 Item Number	Tube O.D.	B	316L Item Number
13H-0100-4	1	1.812	-
13H-0150-4	1.5	2.406	-
13H-0200-4	2	3.000	-
13H-0250-4	2.5	3.594	-
13H-0300-4	3	4.188	-
13H-0400-4	4	5.438	-

# 16A

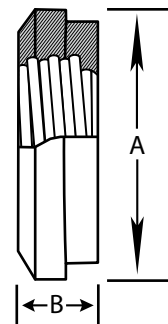
## Plain Bevel Seat Solid End Cap



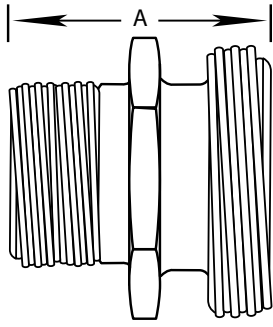
304 Item Number	Tube O.D.	A	B	316L Item Number
16A-0100-4	1	1.312	0.468	16A-0100-6
16A-0150-4	1.5	1.843	0.562	16A-0150-6
16A-0200-4	2	2.375	0.625	16A-0200-6
16A-0250-4	2.5	2.906	0.656	16A-0250-6
16A-0300-4	3	3.437	0.718	16A-0300-6
16A-0400-4	4	4.500	0.812	16A-0400-6

# 23B

## Tapped Thermometer Cap



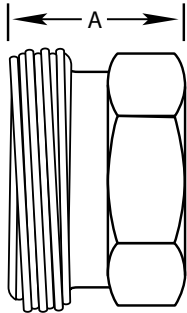
304 Item Number	Tube O.D.	A	B	316L Item Number
23B-0100-4	1	1.312	0.468	23B-0100-6
23B-0150-4	1.5	1.843	0.562	23B-0150-6
23B-0200-4	2	2.375	0.625	23B-0200-6
23B-0250-4	2.5	2.906	0.656	23B-0250-6
23B-0300-4	3	3.437	0.718	23B-0300-6
23B-0400-4	4	4.500	0.812	23B-0400-6



**21**

**Threaded Bevel Seat x Male NPT Adapter**

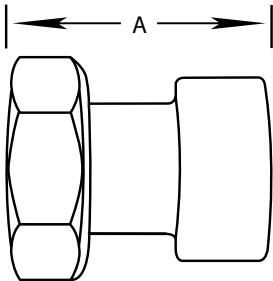
304 Item Number	Tube O.D.	A	316L Item Number
21-0100x0100-4	1 x 1	2.250	21-0100x0100-6
21-0150x0150-4	1.5 x 1.5	2.438	21-0150x0150-6
21-0200x0200-4	2 x 2	2.656	21-0200x0200-6
21-0250x0250-4	2.5 x 2.5	3.281	21-0250x0250-6
21-0300x0300-4	3 x 3	3.500	21-0300x0300-6
21-0400x0400-4	4 x 4	3.813	21-0400x0400-6



**22**

**Threaded Bevel Seat x Female NPT Adapter**

304 Item Number	Tube O.D.	A	316L Item Number
22-0100x0100-4	1 x 1	2.063	22-0100x0100-6
22-0150x0150-4	1.5 x 1.5	2.250	22-0150x0150-6
22-0200x0200-4	2 x 2	2.344	22-0200x0200-6
22-0250x0250-4	2.5 x 2.5	2.094	22-0250x0250-6
22-0300x0300-4	3 x 3	2.188	22-0300x0300-6
22-0400x0400-4	4 x 4	2.625	22-0400x0400-6



**14-18**

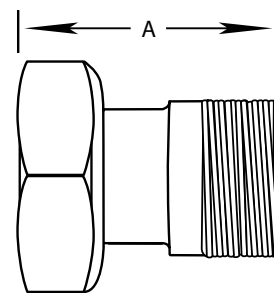
**Plain Bevel Seat with Hex Nut x Female NPT Adapter**

304 Item Number	Tube O.D.	A	316L Item Number
14-18-0100-4	1	3.125	14-18-0100-6
14-18-0150-4	1.5	3.250	14-18-0150-6
14-18-0200-4	2	3.312	14-18-0200-6
14-18-0250-4	2.5	4.062	14-18-0250-6
14-18-0300-4	3	4.250	14-18-0300-6
14-18-0400-4	4	4.312	14-18-0400-6

## 14-19

### Plain Bevel Seat with Hex Nut x Male NPT Adapter

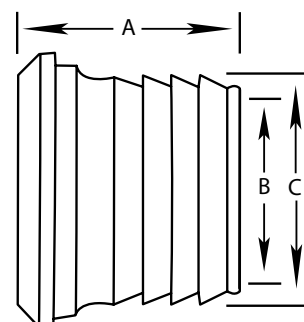
304 Item Number	Tube O.D.	A	316L Item Number
14-19-0100-4	1	3.125	14-19-0100-6
14-19-0150-4	1.5	3.250	14-19-0150-6
14-19-0200-4	2	3.312	14-19-0200-6
14-19-0250-4	2.5	4.062	14-19-0250-6
14-19-0300-4	3	4.250	14-19-0300-6
14-19-0400-4	4	4.312	14-19-0400-6



## 14AHR

### Plain Bevel Seat Rubber Hose Adapter

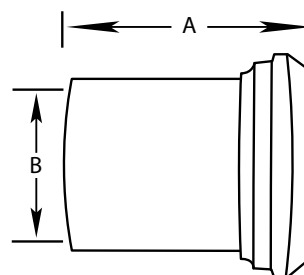
304 Item Number	Tube O.D.	A	B	C	316L Item Number
14AHR-0100-7-4	1	1.687	0.870	1.0	14AHR-0100-7-6
14AHR-0150-7-4	1.5	1.687	1.370	1.5	14AHR-0150-7-6
14AHR-0200-7-4	2	2.312	1.870	2.0	14AHR-0200-7-6
14AHR-0250-7-4	2.5	2.343	2.370	2.5	14AHR-0250-7-6
14AHR-0300-7-4	3	3.500	2.870	3.0	14AHR-0300-7-6
14AHR-0400-7-4	4	4.000	3.834	4.0	14AHR-0400-7-6

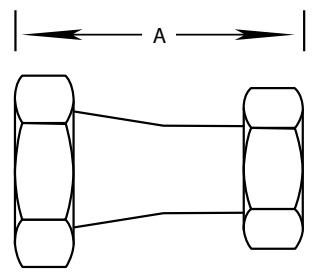
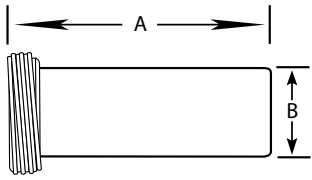
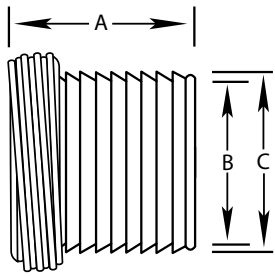


## 14AHT

### Plain Bevel Seat Tygon® Hose Adapter

304 Item Number	Tube O.D.	A	B	316L Item Number
14AHT-0100-7-4	1	4.688	1.0	14AHT-0100-7-6
14AHT-0150-7-4	1.5	4.719	1.5	14AHT-0150-7-6
14AHT-0200-7-4	2	4.719	2.0	14AHT-0200-7-6
14AHT-0250-7-4	2.5	4.844	2.5	14AHT-0250-7-6
14AHT-0300-7-4	3	4.906	3.0	14AHT-0300-7-6
14AHT-0400-7-4	4	5.218	4.0	14AHT-0400-7-6





## 15AHR

### Threaded Bevel Seat Rubber Hose Adapter

304 Item Number	Tube O.D.	A	B	C	316L Item Number
15AHR-0100-7-4	1	1.687	0.870	1.0	15AHR-0100-7-6
15AHR-0150-7-4	1.5	1.687	1.370	1.5	15AHR-0150-7-6
15AHR-0200-7-4	2	2.312	1.870	2.0	15AHR-0200-7-6
15AHR-0250-7-4	2.5	2.343	2.370	2.5	15AHR-0250-7-6
15AHR-0300-7-4	3	3.500	2.870	3.0	15AHR-0300-7-6
15AHR-0400-7-4	4	4.000	3.834	4.0	15AHR-0400-7-6

## 15AHT

### Threaded Bevel Seat Tygon® Hose Adapter

304 Item Number	Tube O.D.	A	B	316L Item Number
15AHT-0100-7-4	1	4.688	1.0	15AHT-0100-7-6
15AHT-0150-7-4	1.5	4.719	1.5	15AHT-0150-7-6
15AHT-0200-7-4	2	4.719	2.0	15AHT-0200-7-6
15AHT-0250-7-4	2.5	4.844	2.5	15AHT-0250-7-6
15AHT-0300-7-4	3	4.906	3.0	15AHT-0300-7-6
15AHT-0400-7-4	4	5.218	4.0	15AHT-0400-7-6

## 3114F

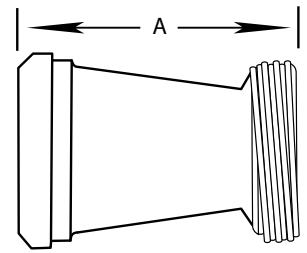
### Plain Bevel Seat x Plain Bevel Seat Concentric Reducer with Hex Nut

304 Item Number	Tube O.D.	A	316L Item Number
3114F-0150X0100-7-4	1.5 x 1	4.062	3114F-0150X0100-7-6
3114F-0200X0100-7-4	2 x 1	6.093	3114F-0200X0100-7-6
3114F-0200X0150-7-4	2 x 1.5	4.218	3114F-0200X0150-7-6
3114F-0250X0150-7-4	2.5 x 1.5	6.343	3114F-0250X0150-7-6
3114F-0250X0200-7-4	2.5 x 2	4.343	3114F-0250X0200-7-6
3114F-0300X0200-7-4	3 x 2	6.437	3114F-0300X0200-7-6
3114F-0300X0250-7-4	3 x 2.5	4.687	3114F-0300X0250-7-6
3114F-0400X0250-7-4	4 x 2.5	8.750	3114F-0400X0250-7-6
3114F-0400X0300-7-4	4 x 3	6.750	3114F-0400X0300-7-6

## 3115F

### Plain Bevel Seat x Threaded Bevel Seat Concentric Reducer

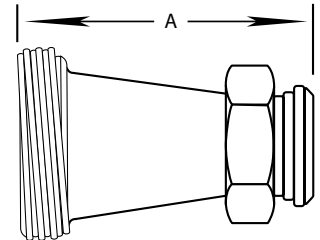
304 Item Number	Tube O.D.	A	316L Item Number
3115F-0150X0100-7-4	1.5 x 1	3.375	3115F-0150X0100-7-6
3115F-0200X0100-7-4	2 x 1	5.406	3115F-0200X0100-7-6
3115F-0200X0150-7-4	2 x 1.5	3.406	3115F-0200X0150-7-6
3115F-0250X0150-7-4	2.5 x 1.5	5.531	3115F-0250X0150-7-6
3115F-0250X0200-7-4	2.5 x 2	3.562	3115F-0250X0200-7-6
3115F-0300X0200-7-4	3 x 2	5.656	3115F-0300X0200-7-6
3115F-0300X0250-7-4	3 x 2.5	3.781	3115F-0300X0250-7-6
3115F-0400X0250-7-4	4 x 2.5	7.843	3115F-0400X0250-7-6
3115F-0400X0300-7-4	4 x 3	5.937	3115F-0400X0300-7-6

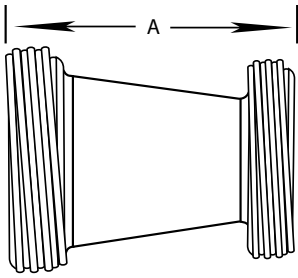


## 31TP

### Threaded Bevel Seat x Plain Bevel Seat Concentric Reducer with Hex Nut

304 Item Number	Tube O.D.	A	316L Item Number
31TP-0150X0100-7-4	1.5 x 1	4.062	31TP-0150X0100-7-6
31TP-0200X0100-7-4	2 x 1	6.093	31TP-0200X0100-7-6
31TP-0200X0150-7-4	2 x 1.5	4.218	31TP-0200X0150-7-6
31TP-0250X0150-7-4	2.5 x 1.5	6.343	31TP-0250X0150-7-6
31TP-0250X0200-7-4	2.5 x 2	4.343	31TP-0250X0200-7-6
31TP-0300X0200-7-4	3 x 2	6.437	31TP-0300X0200-7-6
31TP-0300X0250-7-4	3 x 2.5	4.687	31TP-0300X0250-7-6
31TP-0400X0250-7-4	4 x 2.5	8.750	31TP-0400X0250-7-6
31TP-0400X0300-7-4	4 x 3	6.750	31TP-0400X0300-7-6

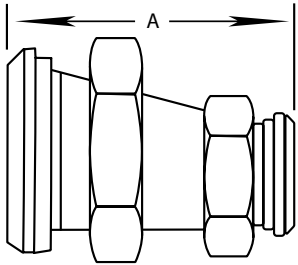




## 31TT

### Threaded Bevel Seat x Threaded Bevel Seat Concentric Reducer

304 Item Number	Tube O.D.	A	316L Item Number
31TT-0150X0100-7-4	1.5 x 1	3.375	31TT-0150X0100-7-6
31TT-0200X0100-7-4	2 x 1	5.406	31TT-0200X0100-7-6
31TT-0200X0150-7-4	2 x 1.5	3.406	31TT-0200X0150-7-6
31TT-0250X0150-7-4	2.5 x 1.5	5.531	31TT-0250X0150-7-6
31TT-0250X0200-7-4	2.5 x 2	3.562	31TT-0250X0200-7-6
31TT-0300X0200-7-4	3 x 2	5.656	31TT-0300X0200-7-6
31TT-0300X0250-7-4	3 x 2.5	3.781	31TT-0300X0250-7-6
31TT-0400X0250-7-4	4 x 2.5	7.843	31TT-0400X0250-7-6
31TT-0400X0300-7-4	4 x 3	5.937	31TT-0400X0300-7-6



## 3214F

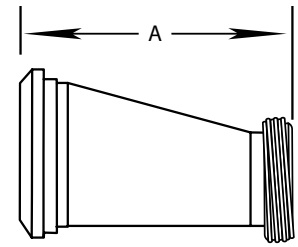
### Plain Bevel Seat x Plain Bevel Seat Eccentric Reducer with Hex Nut

304 Item Number	Tube O.D.	A	316L Item Number
3214F-0150X0100-7-4	1.5 x 1	4.062	3214F-0150X0100-7-6
3214F-0200X0100-7-4	2 x 1	6.093	3214F-0200X0100-7-6
3214F-0200X0150-7-4	2 x 1.5	4.218	3214F-0200X0150-7-6
3214F-0250X0150-7-4	2.5 x 1.5	6.343	3214F-0250X0150-7-6
3214F-0250X0200-7-4	2.5 x 2	4.343	3214F-0250X0200-7-6
3214F-0300X0200-7-4	3 x 2	6.437	3214F-0300X0200-7-6
3214F-0300X0250-7-4	3 x 2.5	4.687	3214F-0300X0250-7-6
3214F-0400X0200-7-4	4 x 2	10.500	3214F-0400X0200-7-6
3214F-0400X0250-7-4	4 x 2.5	8.750	3214F-0400X0250-7-6
3214F-0400X0300-7-4	4 x 3	6.750	3214F-0400X0300-7-6

## 3215F

### Plain Bevel Seat x Threaded Bevel Seat Eccentric Reducer

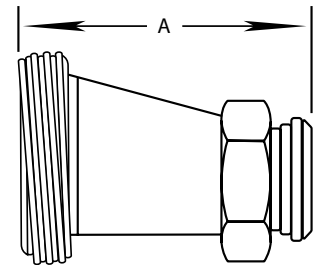
304 Item Number	Tube O.D.	A	316L Item Number
3215F-0150X0100-7-4	1.5 x 1	3.375	3215F-0150X0100-7-6
3215F-0200X0100-7-4	2 x 1	5.406	3215F-0200X0100-7-6
3215F-0200X0150-7-4	2 x 1.5	3.406	3215F-0200X0150-7-6
3215F-0250X0150-7-4	2.5 x 1.5	5.531	3215F-0250X0150-7-6
3215F-0250X0200-7-4	2.5 x 2	3.562	3215F-0250X0200-7-6
3215F-0300X0200-7-4	3 x 2	5.656	3215F-0300X0200-7-6
3215F-0300X0250-7-4	3 x 2.5	3.781	3215F-0300X0250-7-6
3215F-0400X0200-7-4	4 x 2	9.718	3215F-0400X0200-7-6
3215F-0400X0250-7-4	4 x 2.5	7.843	3215F-0400X0250-7-6
3215F-0400X0300-7-4	4 x 3	5.937	3215F-0400X0300-7-6

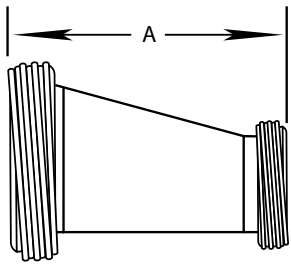


## 32TP

### Threaded Bevel Seat x Plain Bevel Seat Eccentric Reducer with Hex Nut

304 Item Number	Tube O.D.	A	316L Item Number
32TP-0150X0100-7-4	1.5 x 1	4.062	32TP-0150X0100-7-6
32TP-0200X0100-7-4	2 x 1	6.093	32TP-0200X0100-7-6
32TP-0200X0150-7-4	2 x 1.5	4.218	32TP-0200X0150-7-6
32TP-0250X0150-7-4	2.5 x 1.5	6.343	32TP-0250X0150-7-6
32TP-0250X0200-7-4	2.5 x 2	4.343	32TP-0250X0200-7-6
32TP-0300X0200-7-4	3 x 2	6.437	32TP-0300X0200-7-6
32TP-0300X0250-7-4	3 x 2.5	4.687	32TP-0300X0250-7-6
32TP-0400X0200-7-4	4 x 2	10.500	32TP-0400X0200-7-6
32TP-0400X0250-7-4	4 x 2.5	8.750	32TP-0400X0250-7-6
32TP-0400X0300-7-4	4 x 3	6.750	32TP-0400X0300-7-6

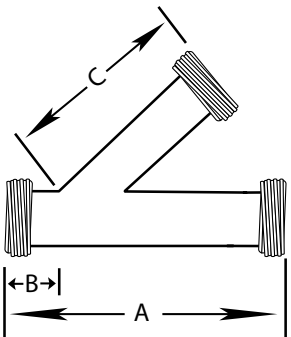




## 32TT

### Threaded Bevel Seat x Threaded Bevel Seat Eccentric Reducer

304 Item Number	Tube O.D.	A	316L Item Number
32TT-0150X0100-7-4	1.5 x 1	3.375	32TT-0150X0100-7-6
32TT-0200X0100-7-4	2 x 1	5.406	32TT-0200X0100-7-6
32TT-0200X0150-7-4	2 x 1.5	3.406	32TT-0200X0150-7-6
32TT-0250X0150-7-4	2.5 x 1.5	5.531	32TT-0250X0150-7-6
32TT-0250X0200-7-4	2.5 x 2	3.562	32TT-0250X0200-7-6
32TT-0300X0200-7-4	3 x 2	5.656	32TT-0300X0200-7-6
32TT-0300X0250-7-4	3 x 2.5	3.781	32TT-0300X0250-7-6
32TT-0400X0200-7-4	4 x 2	9.718	32TT-0400X0200-7-6
32TT-0400X0250-7-4	4 x 2.5	7.843	32TT-0400X0250-7-6
32TT-0400X0300-7-4	4 x 3	5.937	32TT-0400X0300-7-6



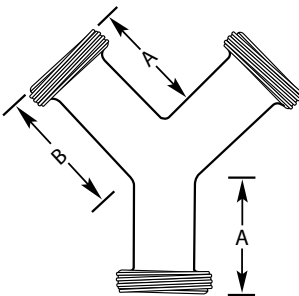
## 28A

### Threaded Bevel Seat Lateral "Y"

304 Item Number	Tube O.D.	A	B	C	316L Item Number
28A-0100-7-4	1	7.436	1.718	5.718	28A-0100-7-6
28A-0150-7-4	1.5	8.810	1.905	6.905	28A-0150-7-6
28A-0200-7-4	2	10.250	2.375	7.805	28A-0200-7-6
28A-0250-7-4	2.5	11.750	2.375	9.375	28A-0250-7-6
28A-0300-7-4	3	12.562	2.781	9.781	28A-0300-7-6
28A-0400-7-4	4	14.874	3.093	11.781	28A-0400-7-6

## 28B

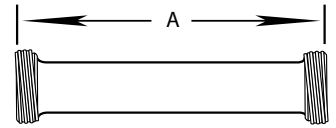
### Threaded Bevel Seat True "Y"



304 Item Number	Tube O.D.	A	B	316L Item Number
28B-0100-7-4	1	2.718	3.156	28B-0100-7-6
28B-0150-7-4	1.5	2.718	3.156	28B-0150-7-6
28B-0200-7-4	2	3.375	4.000	28B-0200-7-6
28B-0250-7-4	2.5	4.245	5.000	28B-0250-7-6
28B-0300-7-4	3	4.906	5.781	28B-0300-7-6
28B-0400-7-4	4	6.406	6.406	28B-0400-7-6

## 17C

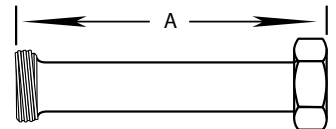
### Threaded Bevel Seat x Threaded Bevel Seat Tube Assembly



304 Item Number	Tube O.D.	Minimum Length A	316L Item Number
17C-0100-***-7-4	1	1.375	17C-0100-***-7-6
17C-0150-***-7-4	1.5	1.437	17C-0150-***-7-6
17C-0200-***-7-4	2	1.437	17C-0200-***-7-6
17C-0250-***-7-4	2.5	1.687	17C-0250-***-7-6
17C-0300-***-7-4	3	1.812	17C-0300-***-7-6
17C-0400-***-7-4	4	2.437	17C-0400-***-7-6

## 17D

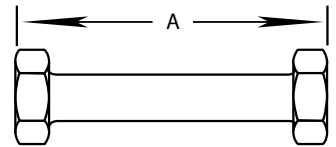
### Threaded Bevel Seat x Plain Bevel Seat with Hex Nut Tube Adapter



304 Item Number	Tube O.D.	Minimum Length A	316L Item Number
17D-0100-***-7-4	1	2.875	17D-0100-***-7-6
17D-0150-***-7-4	1.5	3.125	17D-0150-***-7-6
17D-0200-***-7-4	2	3.375	17D-0200-***-7-6
17D-0250-***-7-4	2.5	3.750	17D-0250-***-7-6
17D-0300-***-7-4	3	3.875	17D-0300-***-7-6
17D-0400-***-7-4	4	4.625	17D-0400-***-7-6

## 17E

### Plain Bevel Seat x Plain Bevel Seat with Hex Nut Tube Adapter



304 Item Number	Tube O.D.	Minimum Length A	316L Item Number
17E-0100-***-7-4	1	2.875	17E-0100-***-7-6
17E-0150-***-7-4	1.5	3.125	17E-0150-***-7-6
17E-0200-***-7-4	2	3.375	17E-0200-***-7-6
17E-0250-***-7-4	2.5	3.750	17E-0250-***-7-6
17E-0300-***-7-4	3	3.875	17E-0300-***-7-6
17E-0400-***-7-4	4	4.625	17E-0400-***-7-6